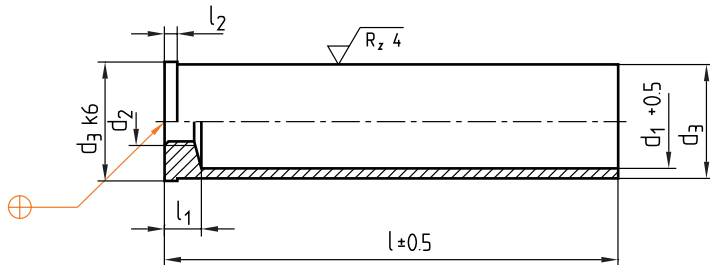


Z20/...

Mat.: ≈ 1.0401/690 + 70 HV 30
 ≈ DIN 16759



l ₁	l ₂	d ₁	d ₂	d ₃	Tol.	l	Nr./No.						
8	2	11	M 6	14	g6	20	Z20/14x 20						
						30	30						
						40	40						
						50	50						
						60	60						
						70	70						
						80	80						
						100	100						
						13	2	16	M 8	20	g6	30	Z20/20x 30
												40	40
60	60												
80	80												
100	100												
120	120												
140	140												
160	160												
13	2,5	21	M10	26	g6	30	Z20/26x 30						
						40	40						
						60	60						
						80	80						
						100	100						
						120	120						
						140	140						
						160	160						
						180	180						
						200	200						
13	2,5	25	M12	30	g6	40	Z20/30x 40						
						60	60						

l ₁	l ₂	d ₁	d ₂	d ₃	Tol.	l	Nr./No.						
13	2,5	25	M12	30	g6	80	Z20/30x 80						
						100	100						
						120	120						
						140	140						
						160	160						
						180	180						
						200	200						
						240	240						
						13	4,5	33	M16	42	g6	40	Z20/42x 40
												60	60
80	80												
100	100												
120	120												
140	140												
160	160												
180	180												
13	4,5	43	M20	54	f6	60	Z20/54x 60						
						80	80						
						120	120						
						160	160						
						200	200						
						240	240						
						280	280						

This is trial version
www.adultpdf.com